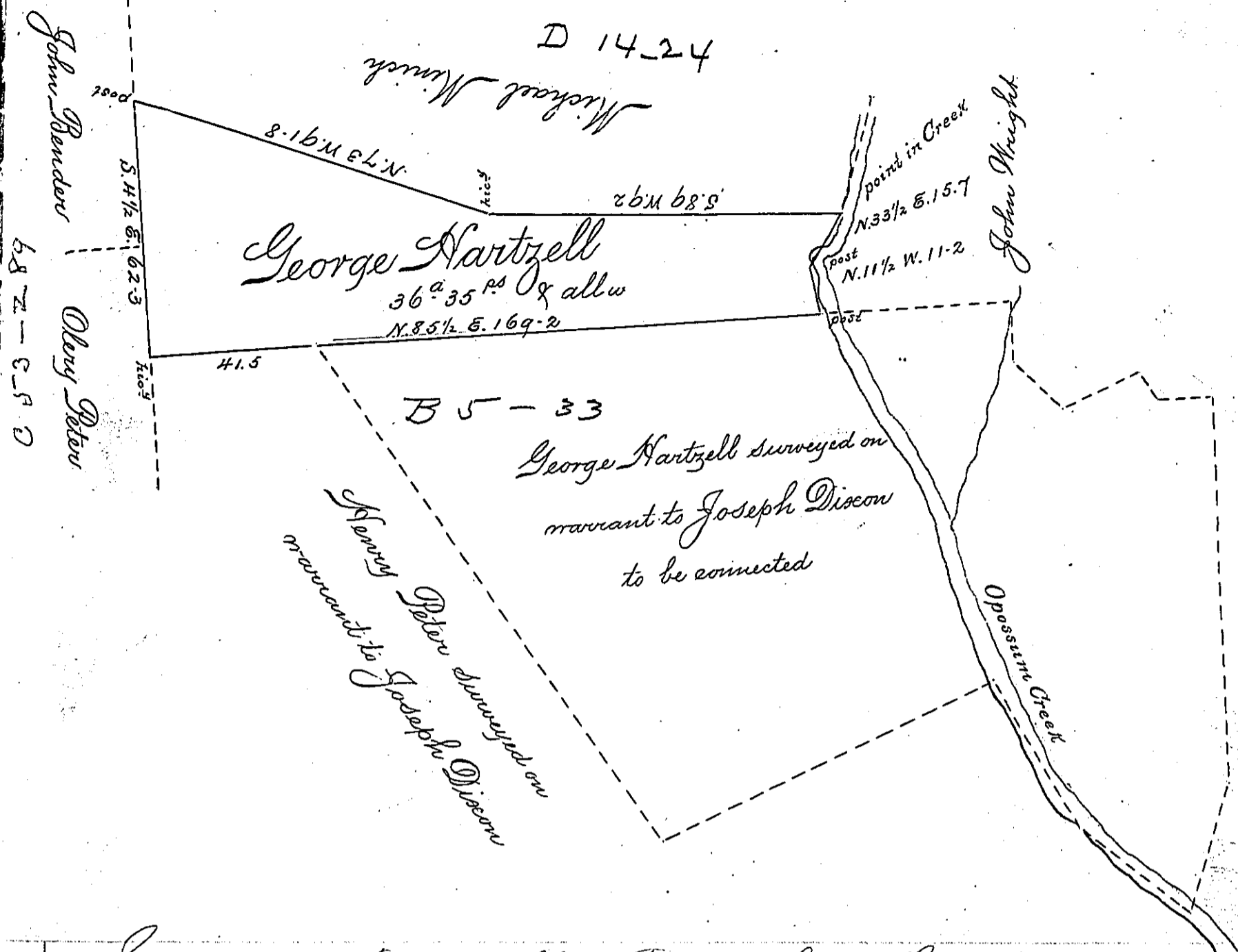


D 14-24



George Nartzell  
 36<sup>a</sup> 35<sup>rs</sup> & all w  
 N. 85 1/2 E. 169.2

B 5 - 33

George Nartzell surveyed on  
 warrant to Joseph Discou  
 to be connected

Henry Peter surveyed on  
 warrant to Joseph Discou

Situate in Mainallen Township Adams County  
 Surveyed January 15<sup>th</sup> 1810 by warrant to George  
 Nartzell Dated January 9<sup>th</sup> 1810 for 30<sup>a</sup>  
 By Sam<sup>l</sup> Sloan D.S  
 To Andrew Porter Esq.  
 Surveyor General

IN TESTIMONY that the above is a copy of the original remaining on file in  
 the Department of Internal Affairs of Pennsylvania, made  
 conformably to an Act of Assembly approved the 16th day of  
 February, 1833, I have hereunto set my Hand and caused  
 the Seal of said Department to be affixed at Harrisburg,  
 this fourth day of October 1898.

James W. Latta  
 Secretary of Internal Affairs.